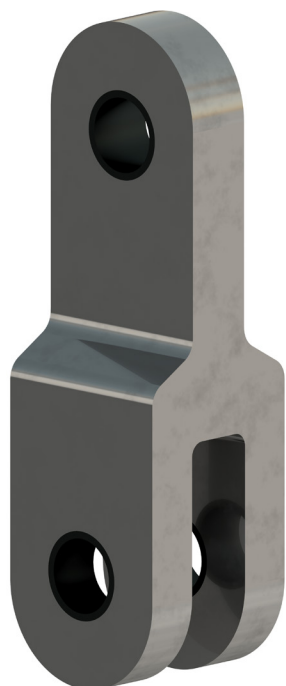


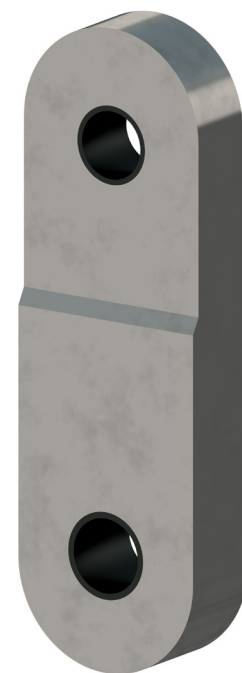
# CHASEBLOCKS



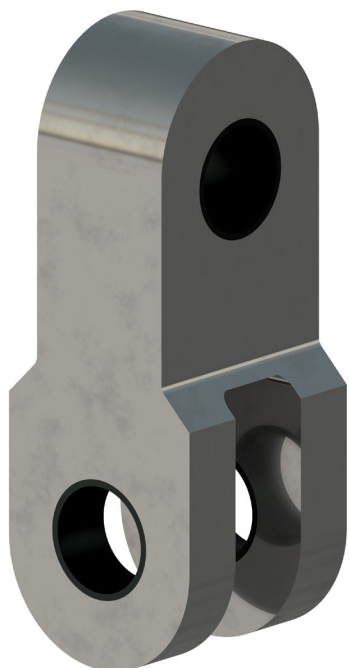
**INLINE  
JAW AND TANG  
CHASEBLOCK**

All chaseblocks and link plates are tailored to the specific application. Chaseblocks are customized to each specific SWL, pin diameter, mating component and client specification.

For many years, Tufnol has been a popular material choice for bushings in mine rope attachments. More recently, RBD has had great success with the implementation of engineered thermopolymer bushings which exhibit exceptionally low coefficients of friction and self-lubricating properties.



**INLINE  
TANG AND TANG  
LINK PLATE**



**90°  
JAW AND TANG  
CHASEBLOCK**



**90°  
JAW AND JAW  
CHASEBLOCK**



**90°  
TANG AND TANG  
CHASEBLOCK**