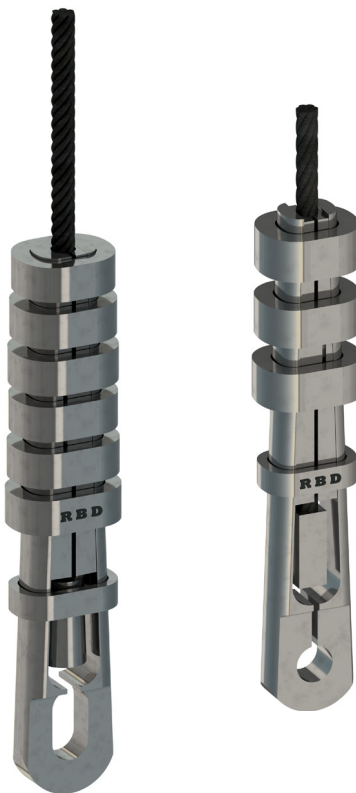


WEDGE CAPPELS



GENERAL DATA

ROPE DIAMETER		SAFE WORKING LOAD SF= 10:1		APPROXIMATE WEIGHT	
mm	in	kgf	tonf	kg	lb
16	5/8	4064	4	16	35
19	3/4	5588	5 1/2	20	44
22	7/8	6096	6	27	60
26	1	8128	8	38	85
29	1 1/8	10668	10 1/2	50	110
32	1 1/4	13208	13	68	150
35	1 3/8	15240	15	82	180
38	1 1/2	18796	18 1/2	110	240
41	1 5/8	21336	21	132	290
45	1 3/4	25400	25	164	360
48	1 7/8	30480	30	190	420
51	2	35560	35	209	460
54	2 1/8	41656	41	268	590
57	2 1/4	41656	41	295	650
60	2 3/8	43688	43	320	705
64	2 1/2	45720	45	360	795

ton = 2240 lb

DIMENSIONS

ROPE DIAMETER		A		B		C		G		N	
mm	in	mm	in	mm	in	mm	in	mm	in	mm	in
16	5/8	29	1 1/8	57	2 1/4	41	1 5/8	32	1 1/4	517	20 3/8
19	3/4	32	1 1/4	57	2 1/4	45	1 3/4	35	1 3/8	584	23
22	7/8	35	1 3/8	67	2 5/8	51	2	38	1 1/2	651	25 5/8
26	1	38	1 1/2	76	3	57	2 1/4	41	1 5/8	718	28 1/4
29	1 1/8	45	1 3/4	89	3 1/2	60	2 3/8	45	1 3/4	787	31
32	1 1/4	48	1 7/8	102	4	64	2 1/2	51	2	854	33 5/8
35	1 3/8	54	2 1/8	102	4	64	2 1/2	57	2 1/4	917	36 1/8
38	1 1/2	57	2 1/4	102	4	70	2 3/4	57	2 1/4	975	38 3/8
41	1 5/8	60	2 3/8	114	4 1/2	76	3	64	2 1/2	1045	41 1/8
45	1 3/4	64	2 1/2	127	5	83	3 1/4	70	2 3/4	1111	43 3/4
48	1 7/8	64	2 3/4	127	5	86	3 3/8	70	2 3/4	1168	46
51	2	70	3	140	5 1/2	92	3 5/8	76	3	1238	48 3/4
54	2 1/8	76	3	162	6 3/8	95	3 3/4	76	3	1321	52
57	2 1/4	76	3 3/8	165	6 1/2	95	3 3/4	89	3 1/2	1372	54
60	2 3/8	86	3 3/8	165	6 1/2	111	4 3/8	89	3 1/2	1432	56 3/8
64	2 1/2	95	3 3/4	219	8 5/8	114	4 1/2	95	3 3/4	1568	61 3/4

